

# LOVE OUR APP

With our new app you'll be able to let us know about any environmental problems and also access a wealth of council information from your smartphone or tablet.

## How does it work?

**1.Download it** - Our free app is available for Android, Windows, Blackberry and iPhones. Simply visit your app store and search for Love Leicester.

**2.Spot it** - Whether it's graffiti, litter, fly-tipping, dog fouling or another environmental problem, you can let us know about it.

**3.Report it** - Take a picture of the problem and upload it using the app. You can tag the location and include other details so we can fix the issue quickly.

**4.Fix it** - When you submit your report the details and picture will be sent to the right team who can fix the problem. They'll also be able to post a picture of what they've done.

As well as reporting problems, you can tell us what you like about Leicester. You can also find event listings, details of your nearest leisure centre, current consultations and easily get to our mobile friendly website for information on all council services.

The app is part of the Love Clean Streets network which is used by many councils. This means you can use it anywhere to report problems in other cities as well as Leicester, and the app will route your report to the right council.

It replaces the old One Clean Leicester app so if you already have this on your phone you'll need to uninstall it and download our new Love Leicester app.

# CITY WARDEN SERVICE UPDATE

## DOG FOULING

We have received complaints regarding dog fouling at the rear of properties on Alexandra Road. We have monitored the area and issued a Community Protection Notice to a suspected offender. Monitoring will continue over the coming weeks.

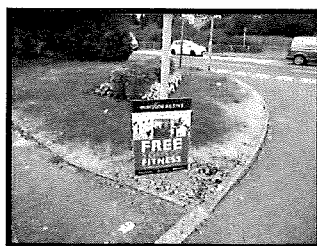
## RUBBISH ON PRIVATE LAND

We recently received complaints in relation to a front garden on Holbrook Road. There was an accumulation of building waste in the front garden that the owners were not moving. This has been resolved following intervention and will be removed in the next few days.



## FLY POSTING

We have identified a number of posters that have been put up on the highway without permission from the council. We have served enforcement notices on the companies concerned and the posters have been removed.



**If you have any issues that you would like to report then please speak to the City Wardens or contact the service on 0116 4541001**

# CITY WARDEN SERVICE



**Chris Bramley-Brown**

Email: [city.warden@leicester.gov.uk](mailto:city.warden@leicester.gov.uk)

Website: [www.leicester.gov.uk](http://www.leicester.gov.uk)

Telephone: 0116 4541001

City Wardens,  
Phoenix House  
1 King Street  
Leicester,  
LE1 6RN



Leicester City Wardens



City Wardens

These are the main issues that the  
City Wardens can help with:

- Educating the public and raising awareness of environmental crimes

## ENFORCEMENT ISSUES:

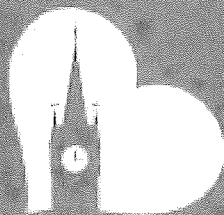
- Littering
- Dog fouling & Dog Control Orders
  - Bins on the street (domestic and commercial)
- Free distribution of printed material
  - Fly posting
  - Small scale fly tipping
  - Graffiti
- Vehicles for sale on the road
- Repairing vehicles on the road
- Failure to produce waste transfer documents
  - Street litter control notices
  - Skips & Scaffolding
  - Spitting
- Rubbish on private land

**KNIGHTON WARD**



Leicester  
City Council

**CITY WARDENS WORKING WITH YOU TO IMPROVE THE CITY'S ENVIRONMENT**



**LOVE WHERE YOU LIVE**

## **Love where you live**

As a Leicester City resident there are plenty of things you can do to help keep your neighbourhood clean and tidy:

- **Bring your bin in after collection day**
- **Book a Bulky Waste Collection if you need to get rid of large items**
- **Use a bin - don't drop litter**
- **Clear up after your dog**
- **Look after your home and garden**
- **Report problems like littering, fly tipping and graffiti**
- **Join in with local community clean-up events**

For more information contact the City Wardens on  
0116 454 1001 or email [city.warden@leicester.gov.uk](mailto:city.warden@leicester.gov.uk)